

FireLite PLUS®

- Fire-Rated
- Impact/Safety-Rated
- Barrier to Heat

TecniGlas

Division of ProScience Inc.

1-800-267-1616

Fax: 416-446-6412

www.TecniGlas.com

TecniGlas offers you the leading products in Glass Safety

FIRELITE

- Fire-Rated

FIRELITE PLUS

- Fire-Rated
- Impact/Safety-Rated

FIRELITE NT

- Fire-Rated
- Impact/Safety-Rated

FIRELITE IGU

- Dual lite unit
- STC Rating
- U Value
- Fire or Fire and Impact/Safety-Rated

PYROSTOP

- Fire-Rated
- Impact/Safety-Rated
- Barrier to Radiant Heat

X-RAY

- LX57B Radiation Shielding Glass

NEOCERAM

- Ceramic glass commonly used in gas fireplaces or woodstoves

We also offer but not limited to; Industrial Gauge and Sight Glass, High Temperature/Pressure requirements and other applications.

FIRE-RATED, SAFETY-RATED GLASS CERAMIC

Firelite Plus® is a 5/16" (8mm) thick laminated fire-rated and impact safety-rated glazing material. It is listed for use in doors, sidelites, transoms and borrowed lites with fire rating requirements ranging from 45 to 90 minutes (3 hours in a door).

FEATURES

- Glass ceramic
- Clear and wireless
- Premium grade (polished) Firelite surfaces only
- 5-year limited warranty
- Fire-rated for up to 90 minutes (3 hours in a door)
- Impact safety-rated – meets ANSI Z97.1 and CPSC 16CFR1201 (Cat. I and II)
- Fits in standard fire-rated frames or Designer and Hardwood Series Fireframes from TecniGlas
- May be lightly sandblasted/etched or beveled on one side without affecting fire rating
- Passes positive pressure test standards UL 10C, UBC 7-2 and UBC 7-4
- Large sizes available

Note: This product is not a barrier to radiant heat. This product does not meet test standards ASTM E- 119 or UL 263. If your jurisdiction requires a "barrier to heat" product, please contact TecniGlas and ask about the use of Pyrostop™.

LISTINGS

Listed and labeled by Underwriters Laboratories, Inc.® and Underwriters' Laboratories of Canada. Test report number for labeled fire-rated assemblies are UL File No. R13377 and ULC File No. CR2713. All above tests performed in accordance with UL 9, UL 10B, UL 10C, ASTM E2074, ASTM E2010, CSFM 43.7, NFPA 252, NFPA 257, UBC 43.2, UBC 43.4, UBC 7-2, UBC 7-4, CAN4 S-104 and CAN4 S-106.

Rating	Assembly	Max. Exposed Area (Sq. In./Sq.Ft)	Max. Width or Of Exposed Glazing (In.)	Max. Height Of Exposed Glazing (In.)	Stop Height
20 to 60 min.	Doors (non-temp rise)				
	HMS or wood*	3,204/22.25	36	89	5/8"
	Fireframes D. S.	3,204/22.25	36	89	3/4"
	Doors (temp rise)	100/0.69	12	33	5/8"
	Other than doors				
	HMS or wood*	3,325/23.09	95	95	5/8"
	Fireframes D. S.	3,325/23.09	95	95	3/4"
90 min.	Doors (non-temp rise)	2,034/18.24	36	56 -1/2	3/4"
	Doors (temp rise)	100/0.69	12	13	12"
	Other than doors				
	HMS*	2,627/18.24	56 - 1/2	56 -1/2	5/8"
	Fireframes D. S.	2,627/18.24	56 - 1/2	56 -1/2	3/4"
3 hour	Doors	100/0.69	12	33	1/2"

**HMS indicates hollow metal steel framing. Fireframes D.S. indicates Designer Series narrow profile framing available from TecniGlas. For wood frames, please ask TecniGlas about new Hardwood Fireframes.*

Note: Individual lite sizes cannot exceed "Max. Exposed Area" shown above.

FireLite PLUS[®]

- Fire-Rated**
- Impact/Safety-Rated**
- Barrier to Heat**

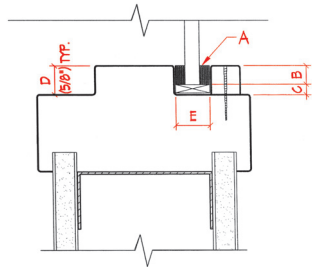
TecniGlas

Division of ProScience Inc.

1-800-267-1616

Fax: 416-446-6412

www.TecniGlas.com



Glazing Thickness: 3/16"
Scale 6" = 1'-0"

- a. Closed cell PVC Tape
- b. Bite: 3/8"
- c. Edge clearance: 1/4" (perimeter)
- d. Stop height: 5/8"
- e. Pocket width: 1/2"

Surface Finish PREMIUM

Max. Sheet Size 48" X 96"

This information is intended for general reference only. For current listing details, please call TecniGlas.

SPECIFICATIONS

All glass designated on the drawings as fire-rated and impact safety-rated shall be 5/16" (8 mm) thick Premium Grade FireLite Plus[®] supplied by TecniGlas.

Complete 3-part CSI format specifications are available online at WWW.TECNIGLAS.COM, or by calling **1-800-267-1616**. Please contact TecniGlas for more information.

GENERAL CHARACTERISTICS

Thickness	5/16" (8 mm) overall
Weight	4 lbs./sq. ft.
Approx. Visible Transmission	85%
Approx. Visible Reflection	9%
Hardness (Vicker's Scale)	700
Fire Rating	20 minutes to 3 hours

LABELING



Each piece of FireLite Plus shall be permanently labeled with the FireLite Plus logo, ULC logo and fire-rating.

INSTALLATION

FireLite Plus shall be glazed into the appropriate fire-rated framing with an approved glazing compound (pure silicone, closed cell PVC tape or DAP 33 putty) as supplied by the installer. For 90 min. ratings that exceed 1,393 sq. in., FireLite Plus shall be glazed with fire-rated glazing tape as supplied by TecniGlas. Check for clearance around the edges, and adjust setting blocks as needed. All edges of the lite(s) must be captured for a valid fire rating.

Inspect each piece of FireLite Plus immediately before installation and eliminate any with observable edge damage or face imperfections. As with any glass produced by the "roll out" method, individual pieces of FireLite Plus may contain minimal variations in thickness. Occasionally, process marks and small occlusions or seeds (bubbles, knots or crystals) may be apparent. However, since they do not generally impair the transparency or affect the technical performance of the glass, they do not represent cause for rejection.

STORAGE & HANDLING

FireLite Plus must be handled with care during transportation, storage, inspection and installation. Store in a dry place.

FireLite and FireLite Plus are registered trademarks of Nippon Electric Glass Co., Ltd. Scotchshield and 3M are registered trademarks of 3M.