

# FireLite<sup>®</sup> NT

- Fire-Rated**
- Impact/Safety-Rated**
- Barrier to Heat**

## TecniGlas

Division of ProScience Inc.

**1-800-267-1616**

**Fax: 416-446-6412**

**www.TecniGlas.com**

**TecniGlas offers you the leading products in Glass Safety**

### FIRELITE

- Fire-Rated

### FIRELITE PLUS

- Fire-Rated
- Impact/Safety-Rated

### FIRELITE NT

- Fire-Rated
- Impact/Safety-Rated

### FIRELITE IGU

- Dual lite unit
- STC Rating
- U Value
- Fire or Fire and Impact/Safety-Rated

### PYROSTOP

- Fire-Rated
- Impact/Safety-Rated
- Barrier to Radiant Heat

### X-RAY

- LX57B Radiation Shielding Glass

### NEOCERAM

- Ceramic glass commonly used in gas fireplaces or woodstoves

*We also offer but not limited to; Industrial Gauge and Sight Glass, High Temperature/Pressure requirements and other applications.*

## FIRE-RATED, SAFETY-RATED GLASS CERAMIC

FireLite NT is a 3/16" (5 mm) thick fire-rated and impact safety-rated glazing material, composed of FireLite and surface-applied 3M™ Scotchshield™ Ultra Film. It is listed for use in doors, sidelites, transoms and borrowed lites with fire-rating requirements ranging from 45 to 90 minutes (3 hours in doors). FireLite NT is available in three different surface conditions: Premium (polished); Standard (unpolished, slight distortion); and Obscure (patterned).

Film is applied to one side of FireLite NT only. However, the product may be glazed with the film on either side without affecting the fire and impact ratings.

## FEATURES

- Clear and wireless
  - 3-year limited warranty
  - Fire-rated for up to 90 minutes (3 hours in a door)
  - Impact safety-rated – meets ANSI Z97.1 and CPSC 16 CFR1201 (Cat. I and II)
  - Glass ceramic with high performance surface-applied 3M™ Scotchshield™ Ultra Film
  - Available in three surface conditions; Premium, Standard and Obscure
  - Fits in standard fire-rated frames or Designer and Hardwood Series Fireframes from TecniGlas
  - May be lightly sandblasted/etched on one side without affecting fire rating
  - Passes positive pressure test standards UL 10C, UBC 7-2 and UBC 7-4
- *Note: This product is not a barrier to radiant heat. This product does not meet test standards ASTM E- 119 or UL 263. If your jurisdiction requires a "barrier to heat" product, please contact TecniGlas and ask about the use of Pyrostop™.*

## LISTINGS

Listed and labeled by Underwriters Laboratories, Inc.® and Underwriters' Laboratories of Canada. Test report number for labeled fire-rated assemblies is UL File No. R13377. All above tests performed in accordance with UL 9, UL 10B, UL 10C, ASTM E2074, ULC File No. CR2713, ASTM E2010, CSFM 43.7, NFPA 252, NFPA 257, UBC 43.2, UBC 43.4, UBC 7-2, UBC 7-4, CAN4 S-104 and CAN4 S-106.

Rating	Assembly	Max. Exposed Area (Sq. In./Sq.Ft)	Max. Width Of Exposed Glazing (In.)	Max. Height Of Exposed Glazing (In.)	Stop Height
<b>20 to 60 min.</b>	<b>Doors (non-temp rise)</b>				
	HMS or wood*	3,204/22.25	36	89	5/8"
	Fireframes D. S.	3,204/22.25	36	89	3/4"
	<b>Doors (temp rise)</b>	100/0.69	12	33	5/8"
	<b>Other than doors</b>				
	HMS or wood*	3,325/23.09	95	95	5/8"
Fireframes D. S.	3,325/23.09	95	95	3/4"	
<b>90 min.</b>	<b>Doors (non-temp rise)</b>	2,034/14.24	36	56 - 1/2	3/4"
	<b>Doors (temp rise)</b>	100/0.69	12	33	1/2"
	<b>Other than doors</b>				
	HMS*	2,627/18.24	56 - 1/2	56 - 1/2	5/8"
Fireframes D. S.	2,627/18.24	56 - 1/2	56 - 1/2	3/4"	
<b>3 hour</b>	<b>Doors</b>	100/0.69	12	33	1/2"

\*HMS indicates hollow metal steel framing. Fireframes D.S. indicates **Designer Series** narrow profile framing available from TecniGlas. For wood frames, please ask TecniGlas about new Hardwood Fireframes.

**Note: Individual lite sizes cannot exceed "Max. Exposed Area" shown above.**

# FireLite® NT

- Fire-Rated**
- Impact/Safety-Rated**
- Barrier to Heat**

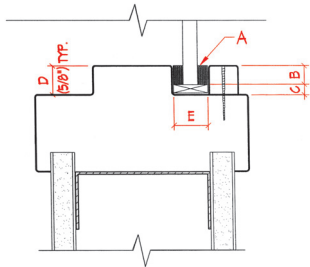
## TecniGlas

Division of ProScience Inc.

**1-800-267-1616**

**Fax: 416-446-6412**

**www.TecniGlas.com**



**Glazing Thickness: 3/16"**

**Scale 6" = 1'-0"**

- a. Closed cell PVC Tape
- b. Bite: 3/8"
- c. Edge clearance: 1/4" (perimeter)
- d. Stop height: 5/8"
- e. Pocket width: 1/2"

Surface Finish	Premium	Standard	Obscure
Max. Sheet Size	48" X 96"	48" X 96"	36" X 96"

*This information is intended for general reference only. For current listing details, please call TecniGlas.*

### SPECIFICATIONS

All glass designated on the drawings as fire-rated shall be 3/16" (5 mm) thick FireLite® NT supplied by TecniGlas. The surface condition shall be either: Premium (polished surfaces); Standard (unpolished surfaces); or Obscure (patterned surface).

Complete 3-part CSI format specifications are available online at [WWW.TECNIGLAS.COM](http://WWW.TECNIGLAS.COM), or by calling **1-800-267-1616**. Please contact TecniGlas for more information.

### GENERAL CHARACTERISTICS

Thickness	-----	3/16" (5 mm) overall
Weight	-----	2.4 lbs./sq. ft.
Approx. Visible Transmission	-----	88%
Approx. Visible Reflection	-----	9%
Hardness (Vicker's Scale)	-----	700
Fire Rating	-----	20 minutes to 3 hours

*Figures are for Premium (polished) FireLite NT and are approximate. Figures will differ slightly for Standard (unpolished) and Obscure (patterned) surface finishes.*

### LABELING

Each piece of FireLite NT shall be permanently labeled with the FireLite NT logo, ULC logo and fire-rating.



### INSTALLATION

FireLite NT shall be glazed into the appropriate fire-rated framing with an approved glazing compound (pure silicone, closed cell PVC tape or DAP 33 putty) as supplied by the installer. For 90 min. ratings that exceed 1,393 sq. in., FireLite NT shall be glazed with fire-rated glazing tape as supplied by TecniGlas. Check for clearance around the edges, and adjust setting blocks as needed. All edges of the lite(s) must be captured for a valid fire rating.

Inspect each piece of FireLite NT immediately before installation and eliminate any with observable edge damage or face imperfections. As with any glass produced by the "roll out" method, individual pieces of FireLite NT may contain minimal variations in thickness. Occasionally, process marks and small inclusions or seeds (bubbles, knots or crystals) may be apparent. However, since they do not generally impair the transparency or affect the technical performance of the glass, they do not represent cause for rejection.

### STORAGE & HANDLING

FireLite NT must be handled with care during transportation, storage, inspection and installation. Store in a dry place.

*FireLite and FireLite Plus are registered trademarks of Nippon Electric Glass Co., Ltd. Scotchshield and 3M are registered trademarks of 3M.*