

# FireLite®

- Fire-Rated**
- Impact/Safety-Rated**
- Barrier to Heat**

## TecniGlas

Division of ProScience Inc.

**1-800-267-1616**

**Fax: 416-446-6412**

**www.TecniGlas.com**

**TecniGlas offers you the leading products in Glass Safety**

### FIRELITE

- Fire-Rated

### FIRELITE PLUS

- Fire-Rated
- Impact/Safety-Rated

### FIRELITE NT

- Fire-Rated
- Impact/Safety-Rated

### FIRELITE IGU

- Dual lite unit
- STC Rating
- U Value
- Fire or Fire and Impact/Safety-Rated

### PYROSTOP

- Fire-Rated
- Impact/Safety-Rated
- Barrier to Radiant Heat

### X-RAY

- LX57B Radiation Shielding Glass

### NEOCERAM

- Ceramic glass commonly used in gas fireplaces or woodstoves

*We also offer but not limited to; Industrial Gauge and Sight Glass, High Temperature/Pressure requirements and other applications.*

## FIRE-RATED GLASS CERAMIC

FireLite® is a 3/16" (5 mm) thick fire-rated glazing material. It is listed for use in **non-impact safety-rated locations** such as transoms and borrowed lites with fire-rating requirements ranging from 45 to 90 minutes. Firelite is available in three different surface conditions: **Premium** (polished); **Standard** (unpolished, slight distortion); and **Obscure** (patterned).

## FEATURES

- Glass ceramic
- Clear and wireless
- Fire-rated for up to 90 minutes
- Fits in standard fire-rated frames or Designer and Hardwood Series Fireframes from TecniGlas
- May be lightly sandblasted or etched on one side without affecting the fire-rating
- Passes positive pressure test standards UL 10C, UBC 7-2 and UBC 7-4
- Large sizes available

*Note: This product is not a barrier to radiant heat. This product does not meet test standards ASTM E- 119 or UL 263. If your jurisdiction requires a "barrier to heat" product, please contact TecniGlas and ask about the use of Pyrostop™.*

## LISTINGS

Listed and labeled by Underwriters Laboratories, Inc.® and Underwriters' Laboratories of Canada. Test report numbers for labeled fire-rated assemblies include: UL File No. R13377 and ULC File No. CR2713. All above tests performed in accordance with UL 9, UL 1 0C, ASTM E2010, CSFM 43.7, NFPA 257, UBC 43.4, UBC 7-2, UBC 7-4 and CAN4 S-1 06.

Rating	Assembly	Max. Exposed Area (Sq. In./Sq.Ft)	Max. Width Of Exposed Glazing (In.)	or Max. Height Of Exposed Glazing (In.)	Stop Height
45 to 60 min.	Other than doors				
	HMS or wood*	3,325/23.09	95	95	5/8"
	Fireframes D. S.	3,325/23.09	95	95	3/4"
90 min.	Other than doors				
	HMS*	2,627/18.24	56- 1/2	56-1/2	5/8"
	Fireframes D. S.	2,627/18.24	56- 1/2	56-1/2	3/4"

*\*HMS indicates hollow metal steel framing. Fireframes D.S. indicates Designer Series narrow profile framing available from TecniGlas. For wood frames, please ask TecniGlas about new Hardwood Fireframes.*

*Note: Individual lite sizes cannot exceed "Max. Exposed Area" shown above.*

Surface Finish	Premium	Standard	Obscure
Max. Sheet Size	48" X 96"	48" X 96"	36" X 96"

*This information is intended for general reference only. For current listing details, please call TecniGlas.*

# FireLite®

- Fire-Rated**
- Impact/Safety-Rated**
- Barrier to Heat**

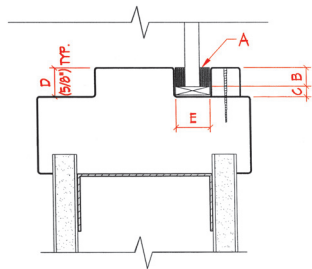
## TecniGlas

Division of ProScience Inc.

**1-800-267-1616**

**Fax: 416-446-6412**

**www.TecniGlas.com**



**Glazing Thickness: 3/16"**  
**Scale 6" = 1'-0"**

- a. Closed cell PVC Tape
- b. Bite: 3/8"
- c. Edge clearance: 1/4" (perimeter)
- d. Stop height: 5/8"
- e. Pocket width: 1/2"

### SPECIFICATIONS

All glass designated on the drawings as fire-rated shall be 3/16" (5 mm) thick FireLite® supplied by TecniGlas. The surface condition shall be either: Premium (polished surfaces); Standard (unpolished surfaces); or Obscure (patterned surface).

Complete 3-part CSI format specifications are available online at [WWW.TECNIGLAS.COM](http://www.TECNIGLAS.COM), or by calling **1-800-267-1616**. Please contact TecniGlas for more information.

### GENERAL CHARACTERISTICS

Thickness	-----	3/16" (5 mm) overall
Weight	-----	2.4 lbs./sq. ft.
Approx. Visible Transmission*	-----	88%
Approx. Visible Reflection*	-----	9%
Hardness (Vicker's Scale)	-----	700
Fire Rating	-----	45 minutes to 90 minutes
Impact Safety Rating	-----	None

*\*Figures are for Premium (polished) FireLite. Figures will differ slightly for Standard (unpolished) and Obscure (patterned) surface finishes.*

### LABELING



Each piece of FireLite shall be permanently labeled with the FireLite logo, ULC logo and fire rating.

### INSTALLATION

FireLite shall be glazed into the appropriate fire-rated framing with an approved glazing compound (pure silicone, closed cell PVC tape or DAP 33 putty) as supplied by the installer. For 90 min. ratings that exceed 1,393 sq. in., FireLite shall be glazed with fire-rated glazing tape as supplied by TecniGlas. Check for clearance around the edges, and adjust setting blocks as needed. All edges of the lite(s) must be captured for a valid fire rating.

Inspect each piece of FireLite immediately before installation and eliminate any with observable edge damage or face imperfections. As with any glass produced by the "roll out" method, individual pieces of FireLite may contain minimal variations in thickness. Occasionally, process marks and small occlusions or seeds (bubbles, knots or crystals) may be apparent. However, since they do not generally impair the transparency or affect the technical performance of the glass, they do not represent cause for rejection.

### STORAGE & HANDLING

FireLite must be handled with care during transportation, storage, inspection and installation. Store in a dry place.

*FireLite and FireLite Plus are registered trademarks of Nippon Electric Glass Co., Ltd. Pyrostop is a registered trademark of Pilkington. Scotchshield and 3M are registered trademarks of 3M.*